

## Calling All BAMA Members!

As well as changing our lives in many ways, Covid has impacted our ability to race, sail, and enjoy each other's company as a group. With luck, next year we can once again enjoy the BAMA Cup and Fast Cat Cup races, raft up in Clipper Cove for a potluck and fun race, and enjoy a Delta cruise together.

We could just write this year off, but we are trimaran sailors! And that's not how we roll. We have an alternative to our regular events that we think the entire club can enjoy.

## The Covid Cup Challenge 2020

The Covid Cup Challenge consists of four sailing courses that we challenge members to complete before Halloween. The courses, which are all very doable in a day sail, include a south bay course, a central bay course, a course that gets boats outside the Golden Gate, and a north bay course. The courses can be sailed at any time. See the printable course illustrations, including course descriptions, attached.

The purpose of the Covid Cup Challenge is to get all BAMA members out on the water in our amazing boats, and to foster camaraderie and cheer through the mutual sharing of our experiences through our write-ups of sailing the courses.

The Covid Cup Challenge can be sailed like you are racing, but it is not a race. It is about sharing your experience. What was the weather like? What was the sea state? How did each leg go? What did you drop overboard? What broke? What did you eat for lunch? Did you see any wildlife? What did you learn along the way?

If you want to race around the courses, by all means, go fast! Report your start and finish times to the Race Committee, and we will keep track of how fast boats sail the courses, on a time corrected basis. If your boat doesn't have a PHRF yet and you want to try sailing around any of the courses fast, the ratings committee will assign you a temporary one for the challenge quickly. Just ask in an email.

Some will choose to "race" around the courses, but your experience at any speed is the focus, not your finish time. Timing your sail is not required. Doing your write-up is required.

The write up can be anything. A written description with a few pictures of key landmarks is a good start, but be creative. Want to do a video? Do it. Want to write a poem, go for it. Share your sailing experience in any way that's fun for you and that you think other club members will enjoy.

And let's not forget the PRIZES.

If you sail all 4 courses before Halloween, you will get a T-Shirt exclaiming your completion of the challenge. The Prize Committee will also award gossamer and

whimsical prizes at the end of the year to boats for various prize-worthy things that we glean through your write-ups.

We can't all get together in body, but we can still sail in our family and social bubbles, (using all required public health measures), and we can get together in spirit through our write-ups of conquering the Covid Cup Challenge.

So get out there and sail the courses! Do your write-ups and make your fellow BAMA members smile. It will be great to hear from everyone who participates.

**THE COURSES - SEE Course Illustrations for general buoy and mark locations.**

Course 1: Around the Islands Figure 8

1. Start: G "1" Fl G 6s., leaving mark to either side
2. Then sail Around Treasure/Yerba Buena Islands and Angel Island in a figure 8 pattern. You may sail around any island first, in either direction, but you must make a figure 8, rounding one island to port, and the other to starboard
3. Then Finish back at G "1" Fl Gs, leaving mark to either side

Course 2: Out the Gate

1. Start: "Little Harding Rock Buoy" G "1" Fl G 4s, leaving the buoy to port
2. Then sail to "Blackaller" Yellow Sphere "C" 0.2 nm East of Ft Point, leaving mark to starboard
3. Then sail out the Golden Gate, leaving the South Tower to port
4. Then sail to Point Bonita Buoy, RG Fl (2+1) R 6s Bell, leaving buoy to starboard
5. Then sail to the Finish where you started, "Little Harding Rock," G "1" Fl G 4, leaving it to starboard

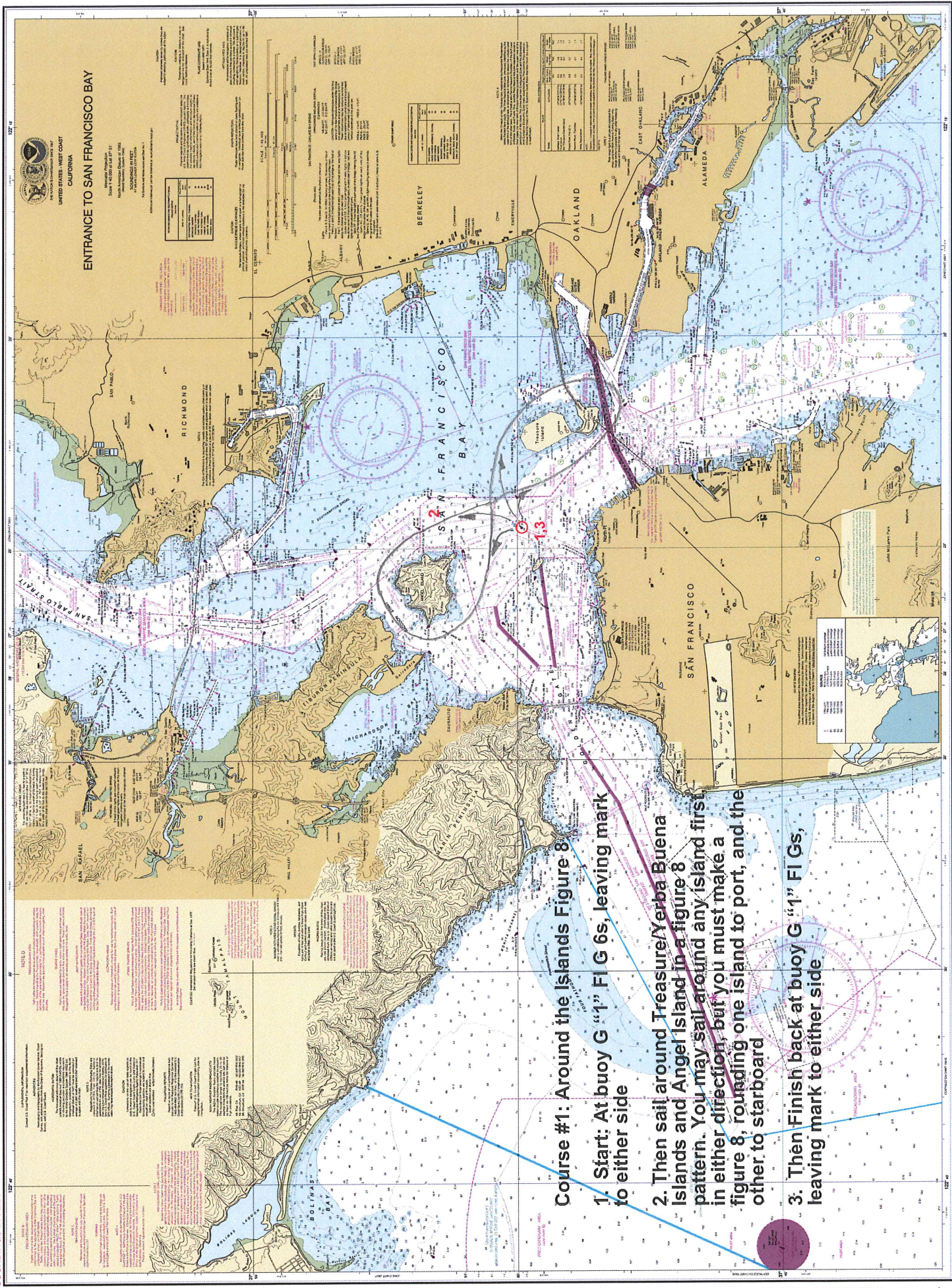
Course 3: Brothers and Sisters

1. Start: R "6" Fl R 2.5s, leaving the buoy to port
2. Then sail around the Brothers, leaving both of them to port
3. Then sail around the Sisters, either way. Check your chart for depths!
4. Then sail to R "14" Fl R 4s, leaving the buoy to starboard
5. Then sail to Fl G 2s "1" PRIV, leaving it to port
6. Then sail to the Finish where you started, at R "6" Fl R 2.5s, leaving it to starboard

Course 4: Say Hi to Willie

1. Start: R "2" Fl R 2.5s leaving the buoy to port
2. Then sail to McCovey Cove. Sail within a respectful distance of the Willie McCovey statue on the south entry to McCovey Cove and say hi to Willie
3. Then sail to G "3" Fl G 4s, leaving the buoy to port
4. Then sail to G "5" Fl G 4s, leaving buoy to port
5. Then sail to Fl R 4s 12ft 3M "4" leaving the mark to port
6. Then sail to R "6" Fl R 6s leaving the buoy to port
7. Then sail to the Finish where you started, R "2" Fl R 2.5s leaving the buoy to port

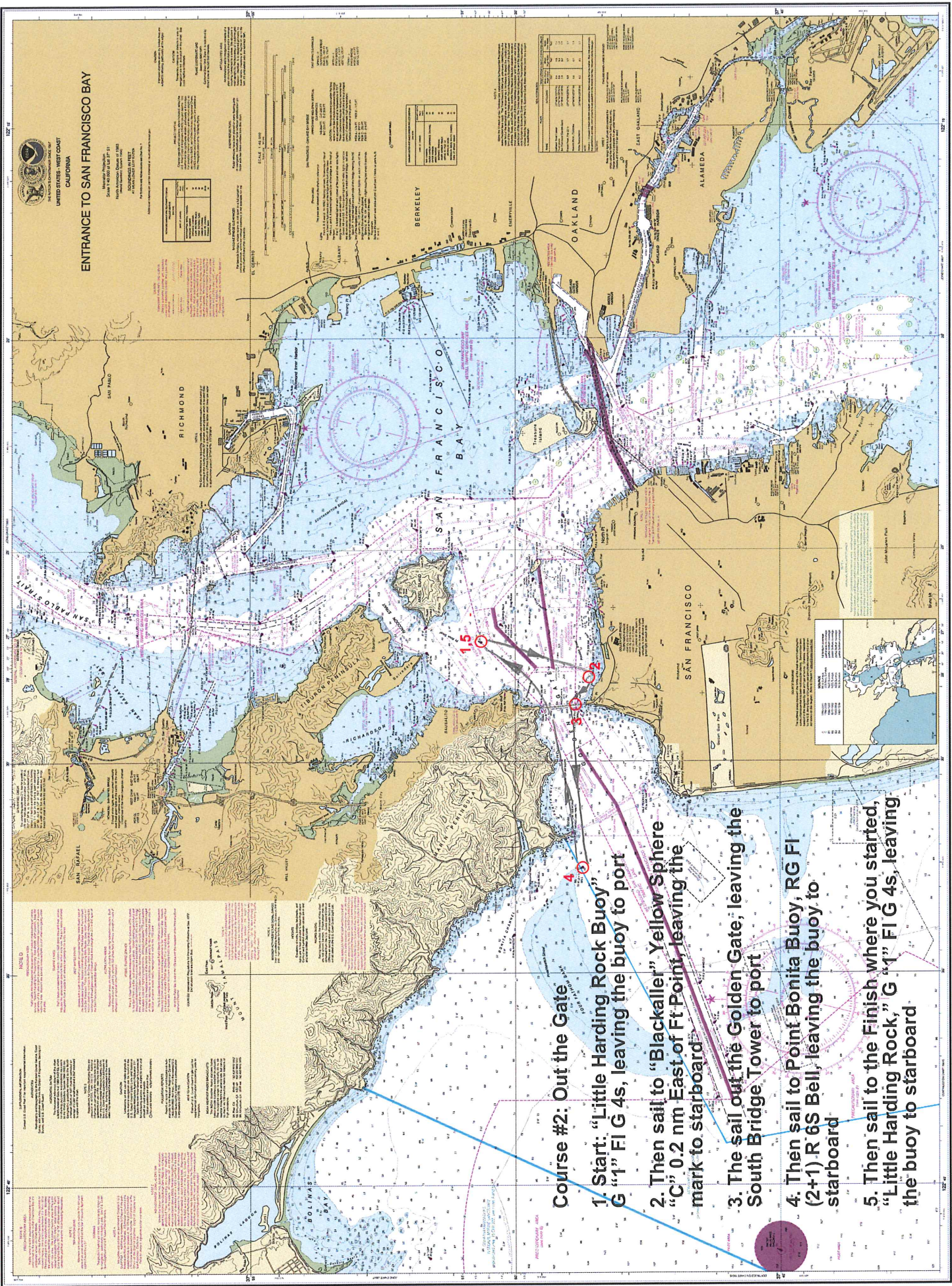




ENTRANCE TO SAN FRANCISCO BAY

- Course #1: Around the Islands Figure 8**
1. Start: At buoy G "1" FI G 6s, leaving mark to either side
  2. Then sail around Treasure/Verba Buena Islands and Angel Island in a figure 8 pattern. You may sail around any island first in either direction, but you must make a figure 8, rounding one island to port, and the other to starboard
  3. Then Finish back at buoy G "1" FI Gs, leaving mark to either side

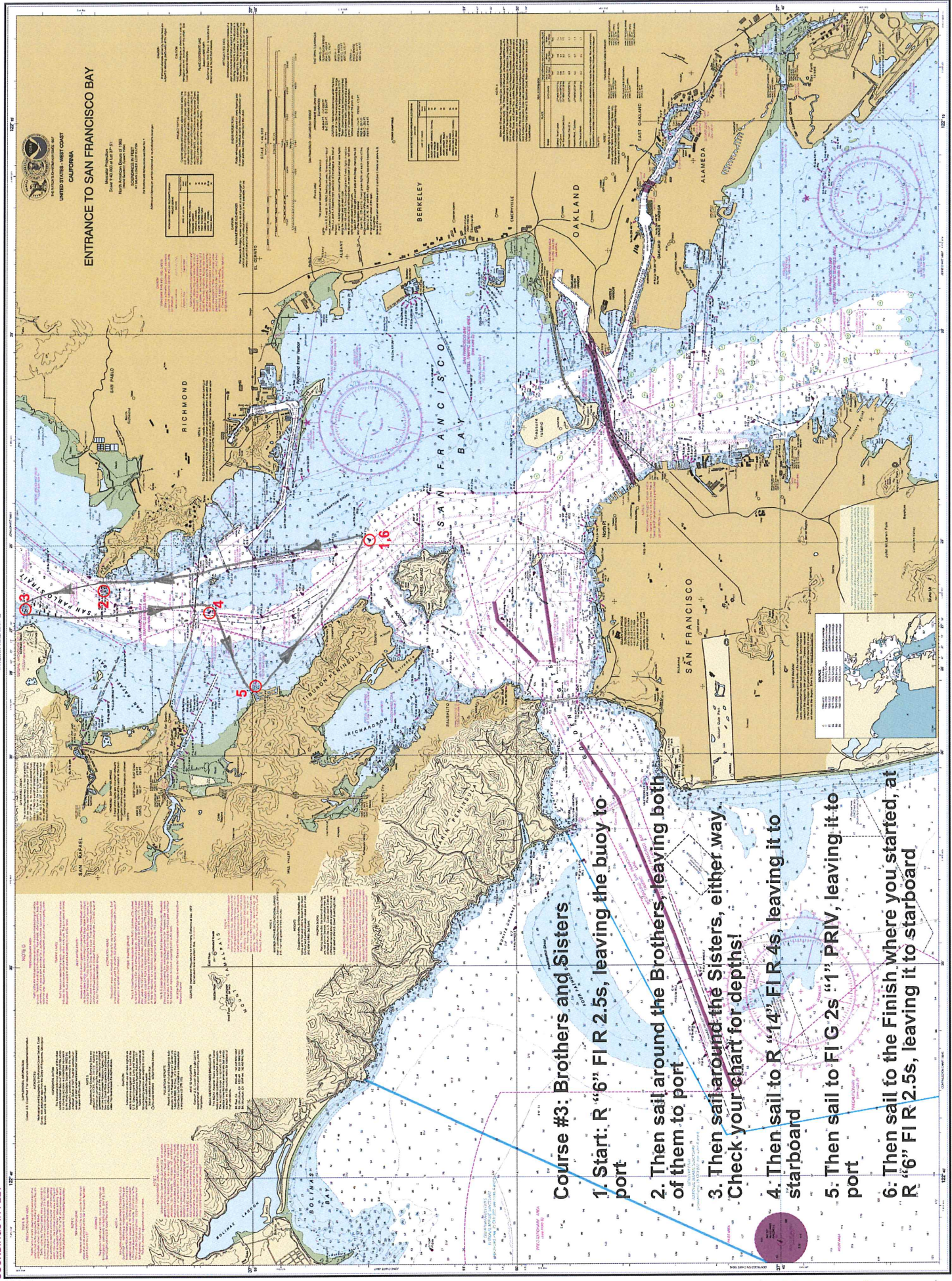




ENTRANCE TO SAN FRANCISCO BAY

- Course #2: Out the Gate**
1. Start: "Little Harding Rock Buoy," G "1" Fl G 4s, leaving the buoy to port
  2. Then sail to "Blackaller" Yellow Sphere "C" 0.2 nm East of Ft Point, leaving the mark to starboard
  3. The sail out the Golden Gate, leaving the South Bridge Tower to port
  4. Then sail to Point Bonita Buoy, RG Fl (2+1) R 6S Bell, leaving the buoy to starboard
  5. Then sail to the Finish where you started, "Little Harding Rock," G "1" Fl G 4s, leaving the buoy to starboard

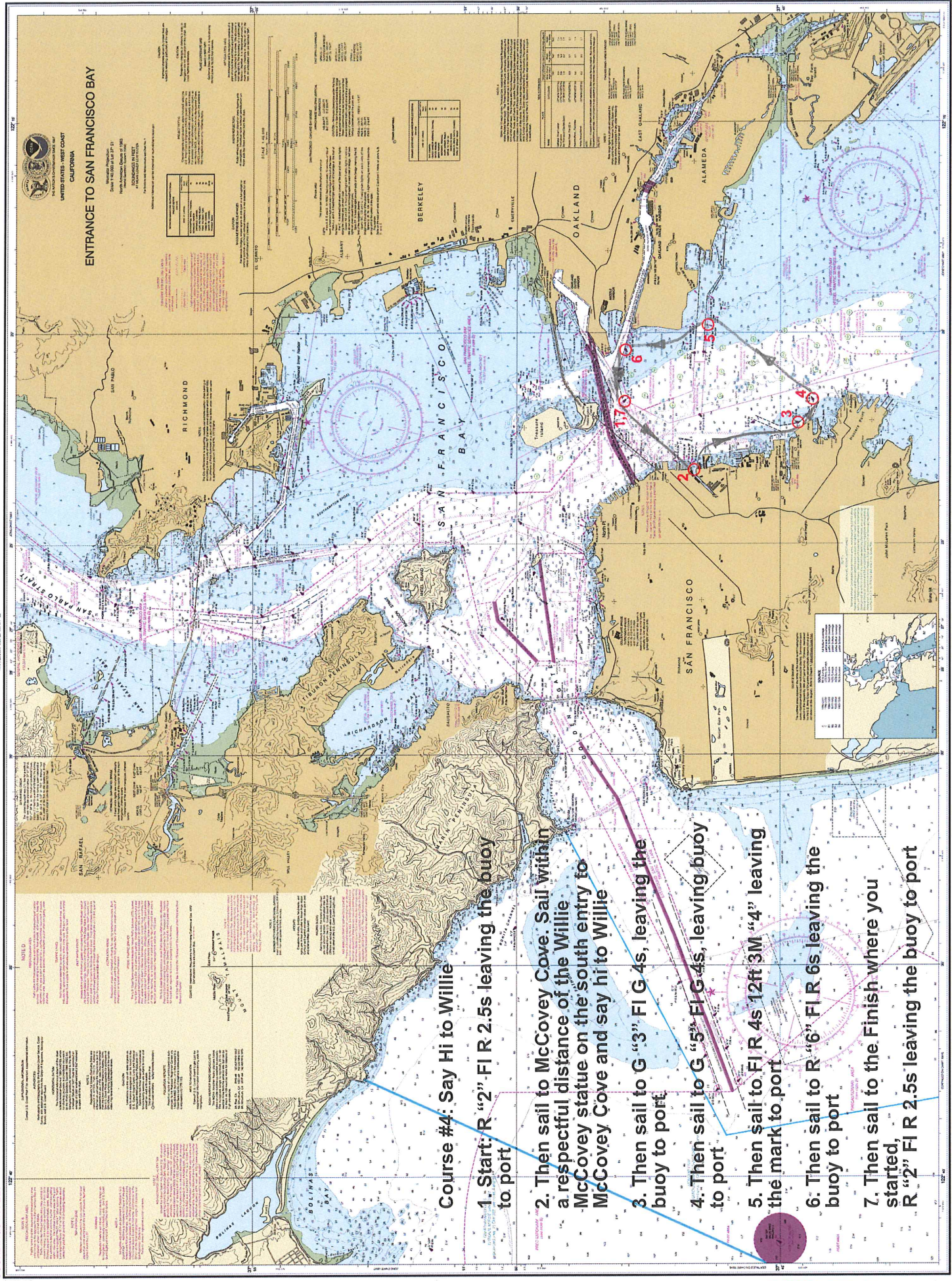




**Course #3: Brothers and Sisters**

1. Start: R "6" FI R 2.5s, leaving the buoy to port
2. Then sail around the Brothers, leaving both of them to port
3. Then sail around the Sisters, either way. Check your chart for depths!
4. Then sail to R "14" FI R 4s, leaving it to starboard
5. Then sail to FI G 2s "1" PRIV, leaving it to port
6. Then sail to the Finish where you started, at R "6" FI R 2.5s, leaving it to starboard





ENTRANCE TO SAN FRANCISCO BAY

Course #4: Say Hi to Willie

1. Start: R "2" FI R 2.5s leaving the buoy to port
2. Then sail to McCovey Cove. Sail within a respectful distance of the Willie McCovey statue on the south entry to McCovey Cove and say hi to Willie
3. Then sail to G "3" FI G 4s, leaving the buoy to port
4. Then sail to G "5" FI G 4s, leaving buoy to port
5. Then sail to FI R 4s 12ft 3M "4" leaving the mark to port
6. Then sail to R "6" FI R 6s leaving the buoy to port
7. Then sail to the Finish where you started, R "2" FI R 2.5s leaving the buoy to port